

Design theme: Self Assembly decorative product for a special event.

Study the Design Brief and the Design Specification below.

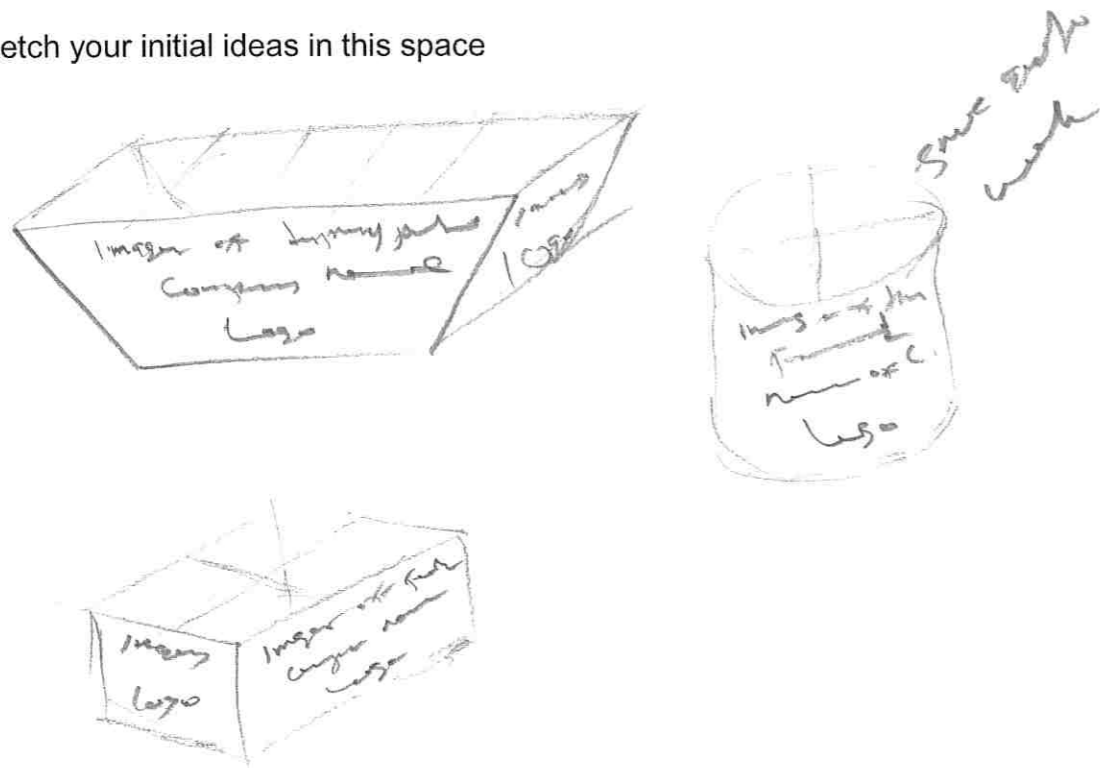
Design Brief: A party caterer requires a disposable tray/box to display finger food at the party table, it should hold items such as sandwich triangles, rolls, crisps, biscuits, macarons etc .

Design Specification:

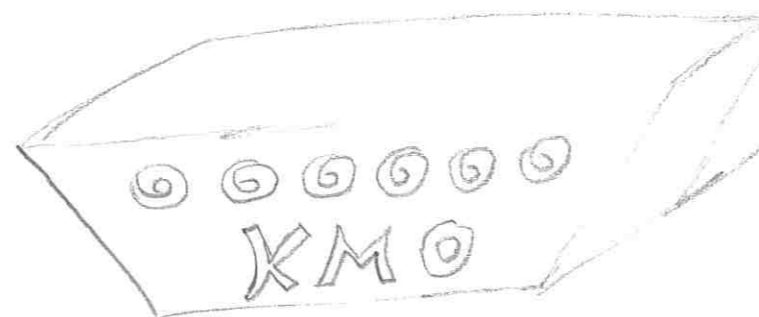
- The container needs to be made from 250gms board.
- It should be attractive with a party theme to the outside.
- It should be able to be cut from a single A4 sheet.
- It must be supplied flat to be erected at the party without glue or tape.



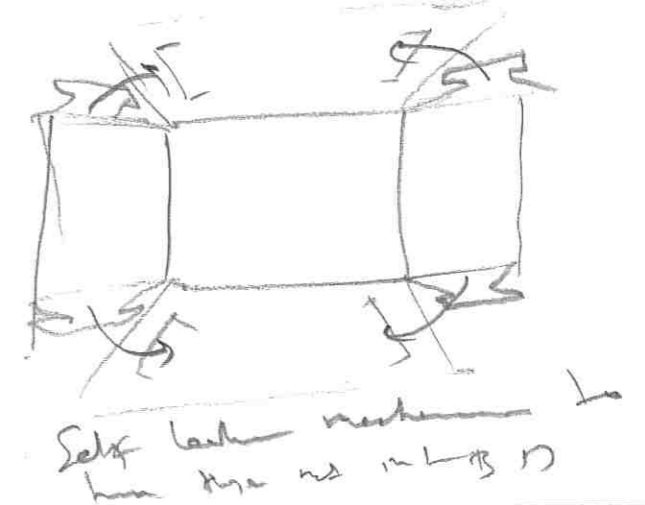
Sketch your initial ideas in this space



Develop one of your ideas in this space.



Make a detailed drawing of how your tray/box is joined when erected.



Draw the "net" of your tray/box in this space.



Design theme: Self Assembly decorative product for a special event.

Study the Design Brief and the Design Specification below.

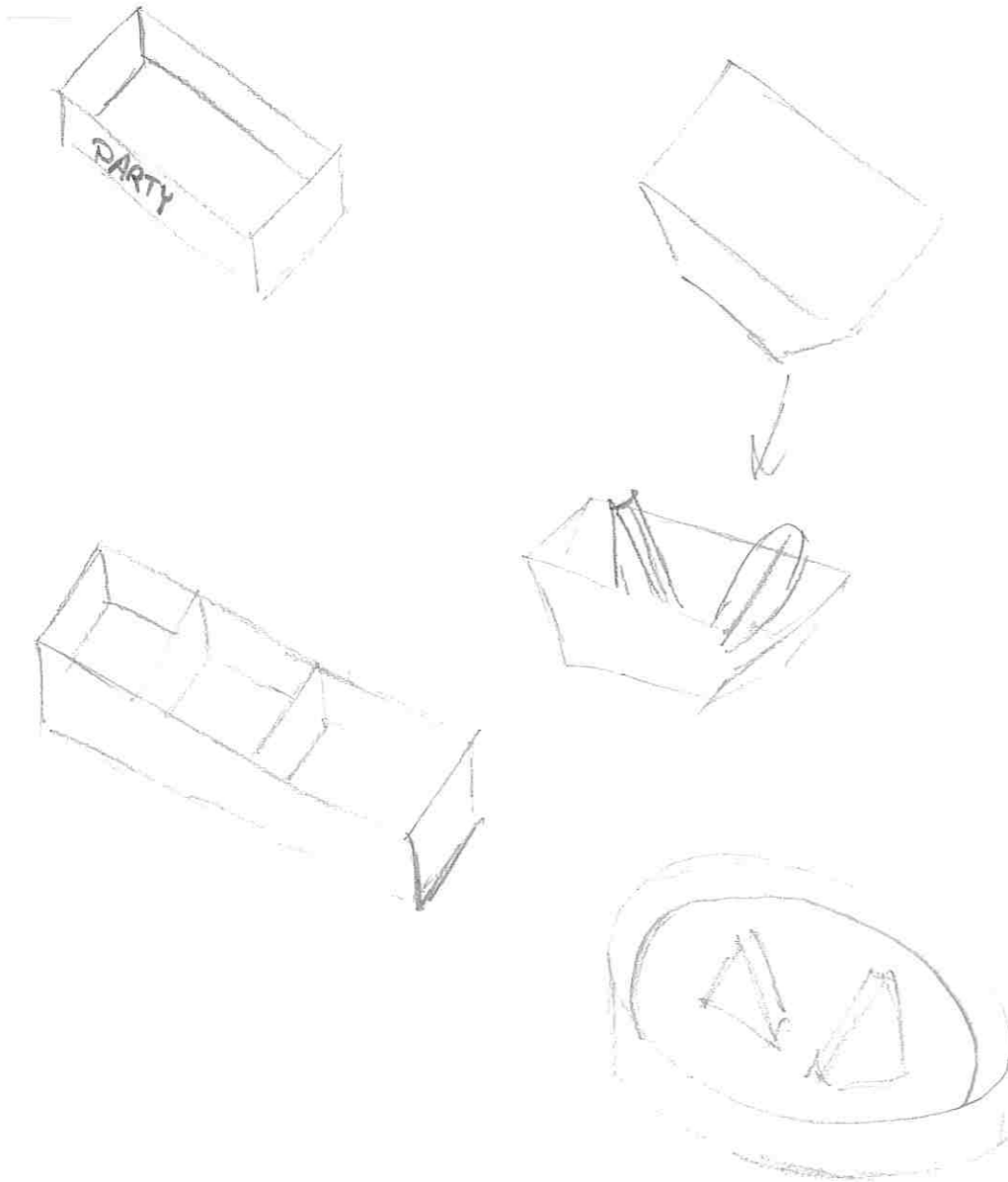
Design Brief: A party caterer requires a disposable tray/box to display finger food at the party table, it should hold items such as sandwich triangles, rolls, crisps, biscuits, macaroons etc .

Design Specification:

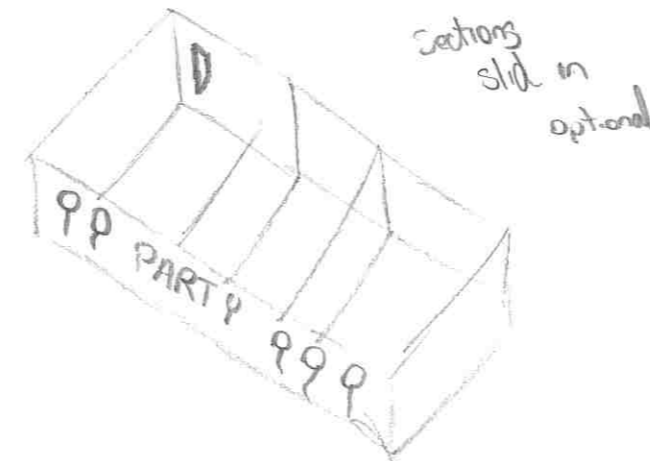
- The container needs to be made from 250gms board.
- It should be attractive with a party theme to the outside.
- It should be able to be cut from a single A4 sheet.
- It must be supplied flat to be erected at the party without glue or tape.



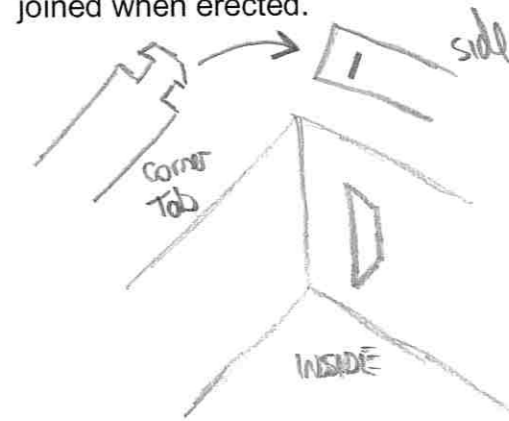
Sketch your initial ideas in this space



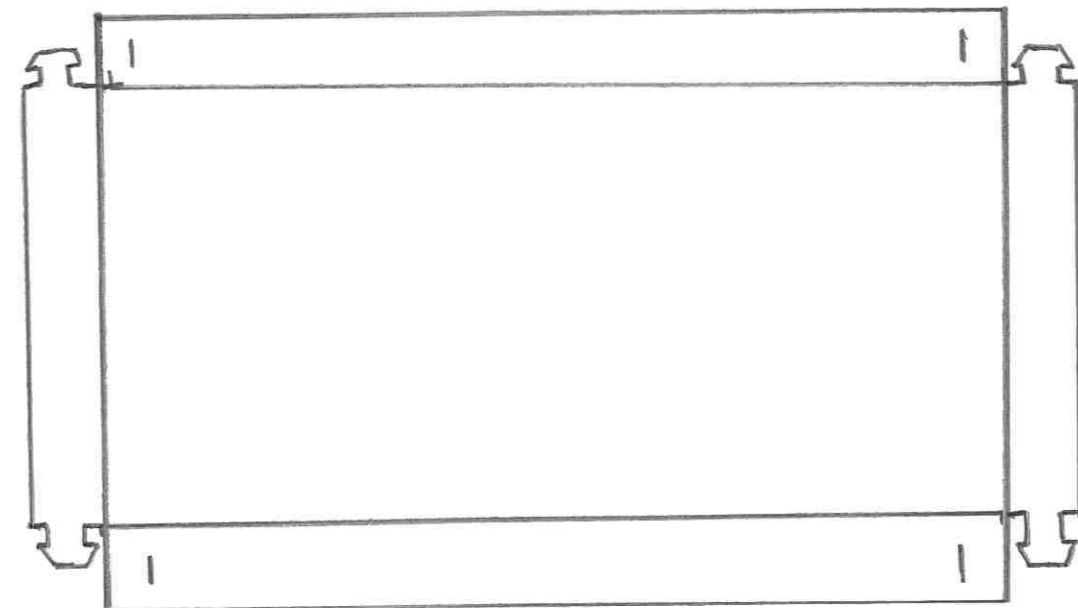
Develop one of your ideas in this space.



Make a detailed drawing of how your tray/box is joined when erected.



Draw the "net" of your tray/box in this space.



Design theme: Self Assembly decorative product for a special event.

Study the Design Brief and the Design Specification below.

Design Brief: A party caterer requires a disposable tray/box to display finger food at the party table, it should hold items such as sandwich triangles, rolls, crisps, biscuits, macaroons etc .

Design Specification:

- The container needs to be made from 250gms board.
- It should be attractive with a party theme to the outside.
- It should be able to be cut from a single A4 sheet.
- It must be supplied flat to be erected at the party without glue or tape.



Sketch your initial ideas in this space

LOCKING TAB.

BALLOON DESIGN

DECORATIVE SHAPED TOP

LOCKING TAB

SMALL GLUE TAB

SQUARE BOX WITH FLUTED TOP

CIRCULAR HANDLES

TALL SIDES

COLORFUL PARTY THEMED DESIGN

Develop one of your ideas in this space.

CURVED TOP

ERGONOMIC HANDLES

PARTY TIME

COLORFUL MESSAGE ON OUTSIDE

PARTY POPPERS

SCALLOPED SIDES

CAKE CANDIES

COLORFUL STREAMERS

STREAMERS

SIDE PANNES

Make a detailed drawing of how your tray/box is joined when erected.

LOCKING TAB

GAP TO LOCK IN PLACE

Draw the "net" of your tray/box in this space.

Design theme: Self Assembly decorative product for a special event.

Study the Design Brief and the Design Specification below.

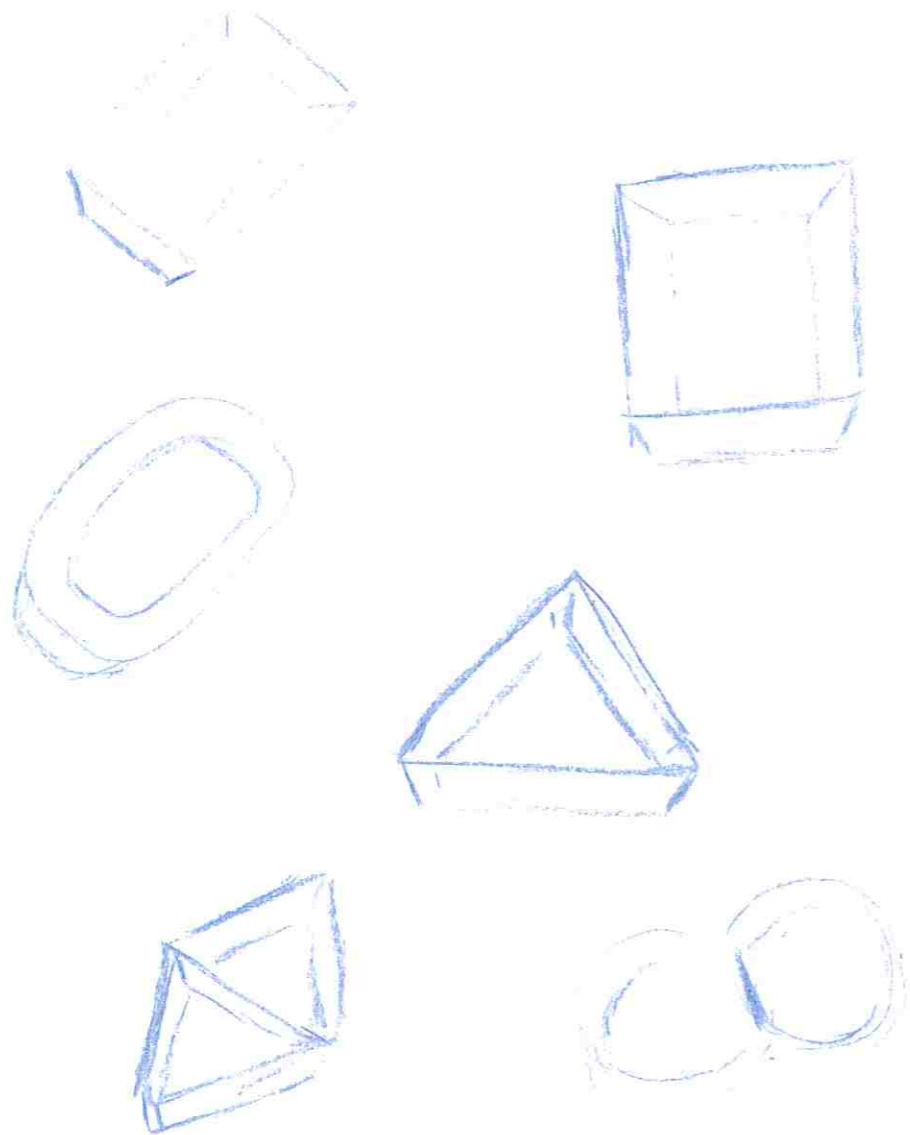
Design Brief: A party caterer requires a disposable tray/box to display finger food at the party table, it should hold items such as sandwich triangles, rolls, crisps, biscuits, macaroons etc .

Design Specification:

- The container needs to be made from 250gms board.
- It should be attractive with a party theme to the outside.
- It should be able to be cut from a single A4 sheet.
- It must be supplied flat to be erected at the party without glue or tape.



Sketch your initial ideas in this space



Develop one of your ideas in this space.



Make a detailed drawing of how your tray/box is joined when erected.



Draw the "net" of your tray/box in this space.

