



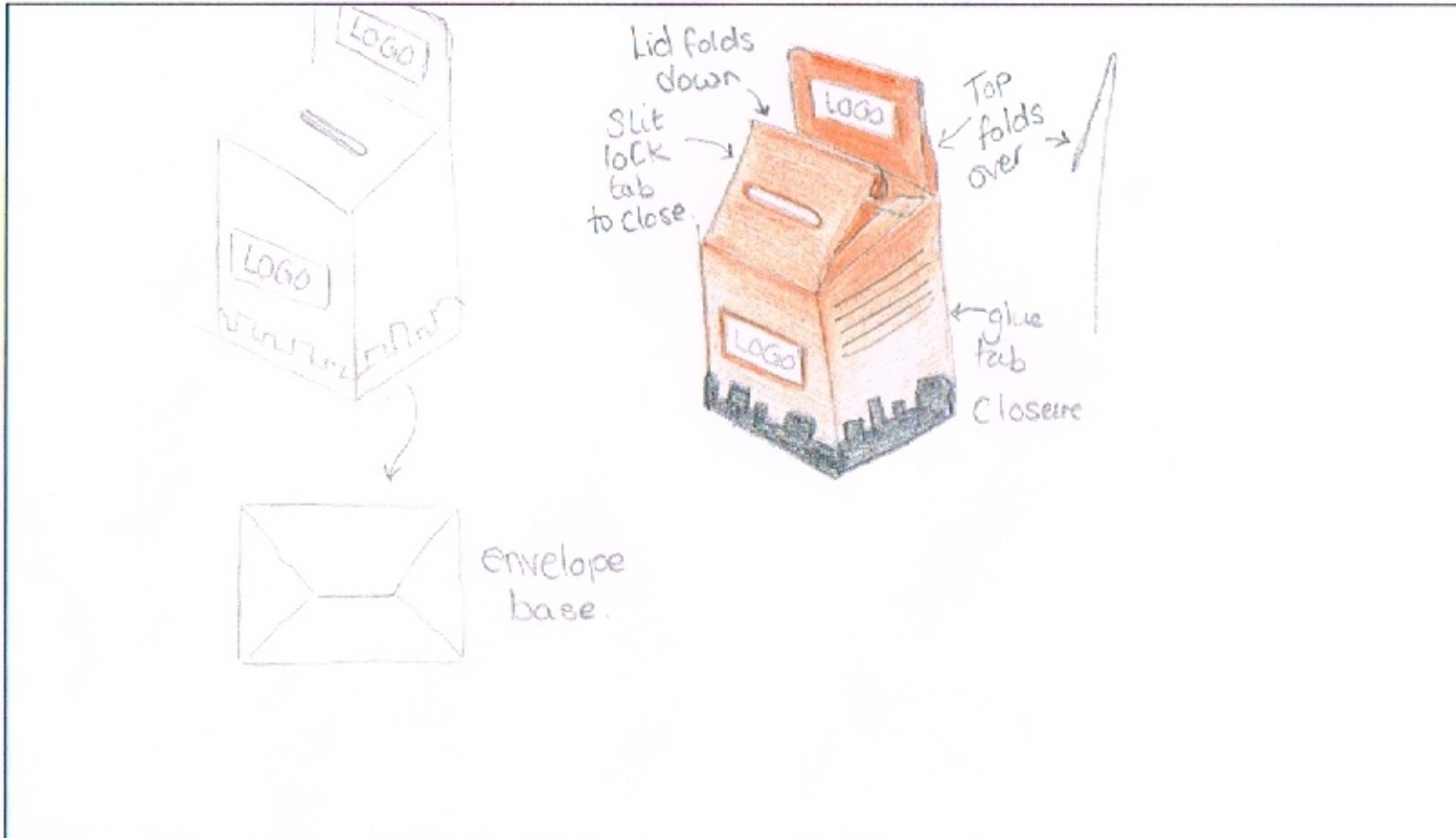
Crisis is a national charity for single homeless people. They want to raise their profile by posting cardboard collecting boxes into every home in the UK.

You are asked to design a card collecting box which will help to raise their profile. The box must be capable of folding flat for easy storage.

Marks will be awarded for:

- A creative solution which clearly promotes the charity
- Details of materials and construction
- Surface graphics and use of colour
- Details of how the box will fold flat

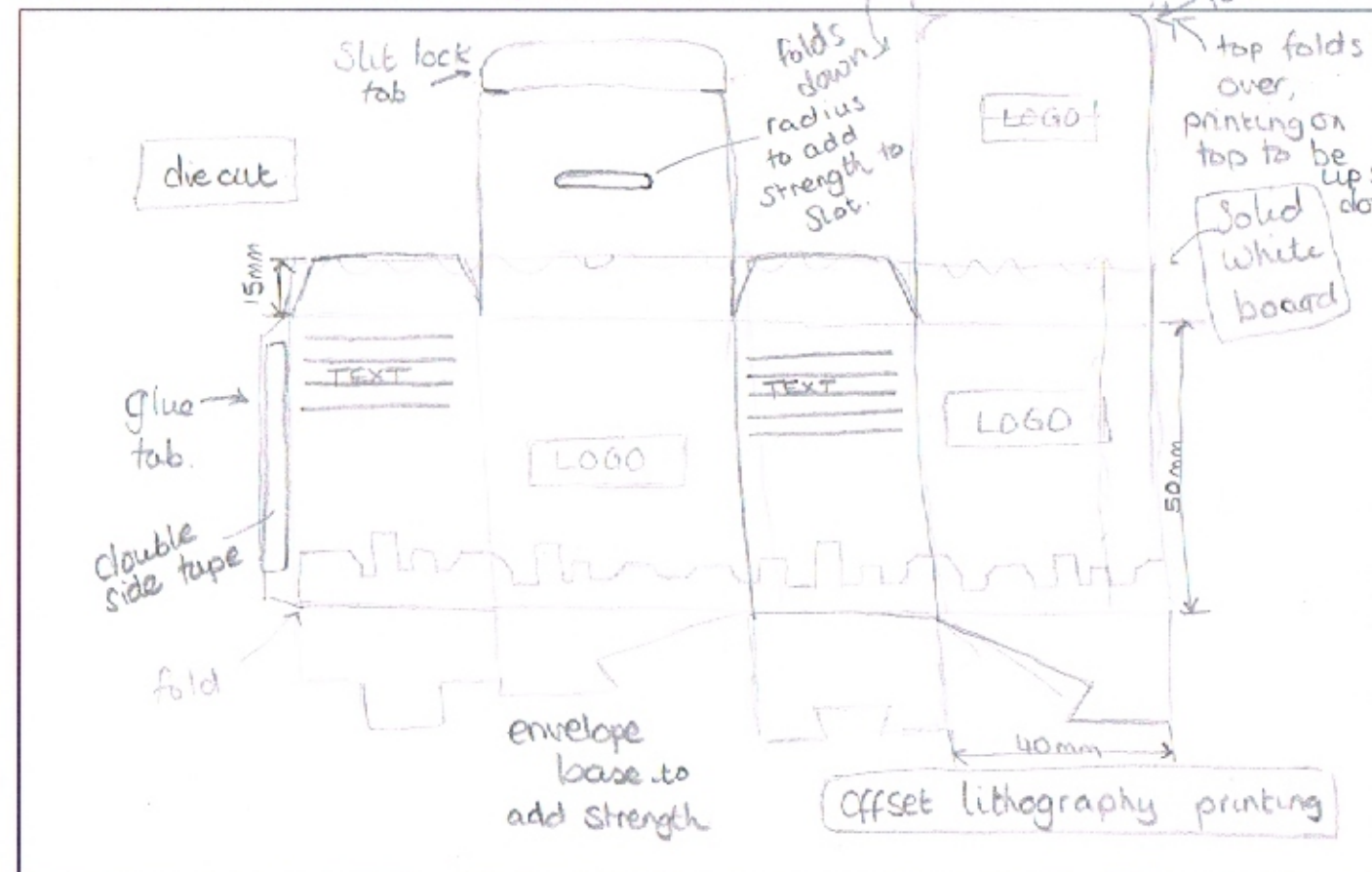
Below, draw a 3D view of your collection box, adding notes and/or sketches to explain how it folds flat.



Complete the table showing important criteria for your collection box and give your reasons. An example has been provided.

Design criteria	Reasons
The box must fold flat	This will reduce storage space and make it easier to transport the boxes from the printers to the charity
Promote the charity	People need to be aware of the charity they are donating to.
Strong enough to hold the coins.	The box needs to contain the change/coins inside & stop them from leaking out

In the space below draw the net for your collection box.



Using the design criteria above to assist you, evaluate your design proposal as to its effectiveness as a collection box as well as a promotional product

The box can be supplied flat, the use of a glue tab with double sided tape to allow user to build the box at home. Envelope base allows for a strong base to hold the coins which will weigh quite a lot. The colour scheme has been kept simple to minimise the amount of colours used & to attract attention. The logo is clearly visible in a number of positions on the box, alongside simple text explaining about the work of the charity.