

# Crisis

Crisis is a national charity for single homeless people. They want to raise their profile by posting cardboard collecting boxes into every home in the UK.

You are asked to design a card collecting box which will help to raise their profile. The box must be capable of folding flat for easy storage.

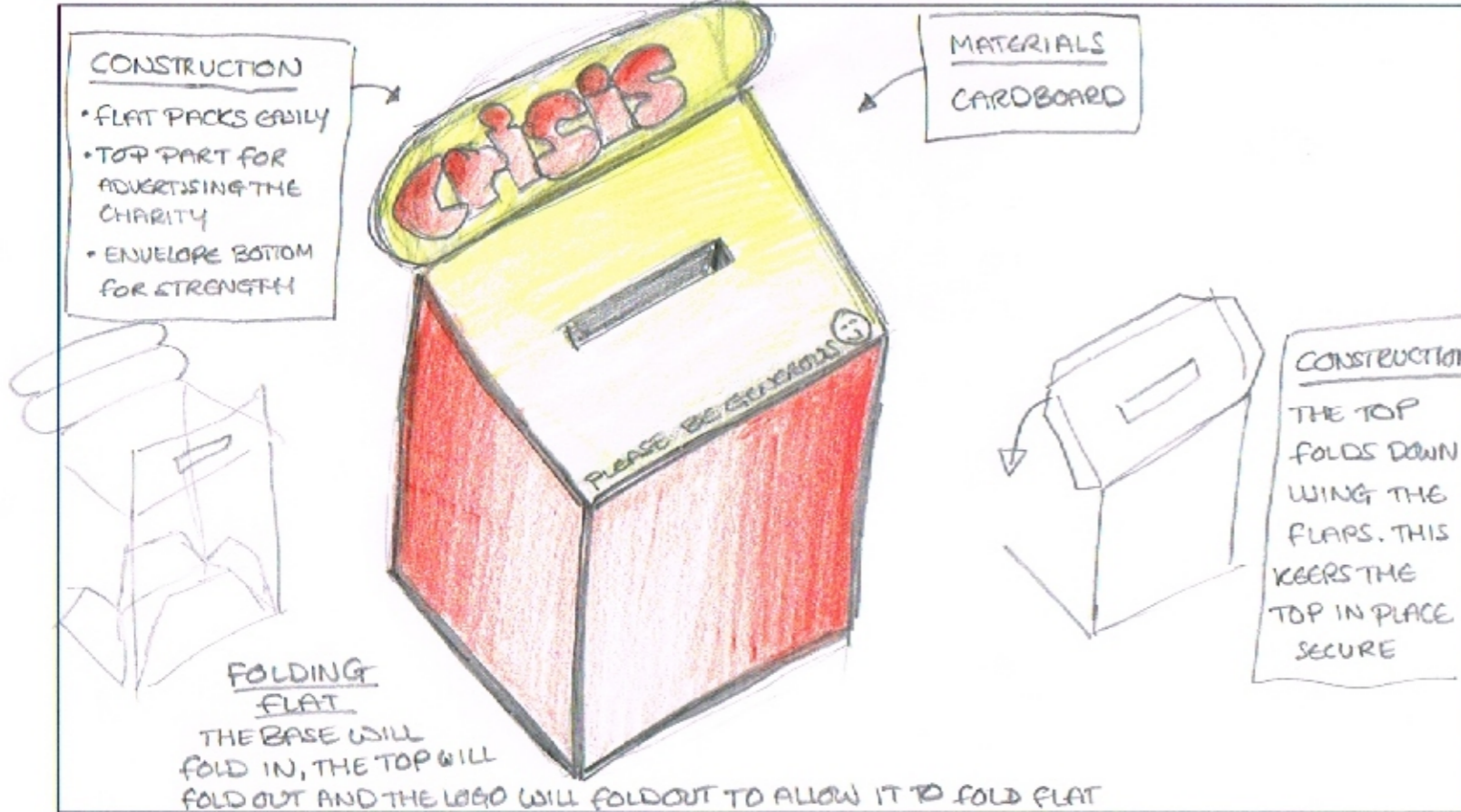
Marks will be awarded for:

- A creative solution which clearly promotes the charity
- Details of materials and construction
- Surface graphics and use of colour
- Details of how the box will fold flat

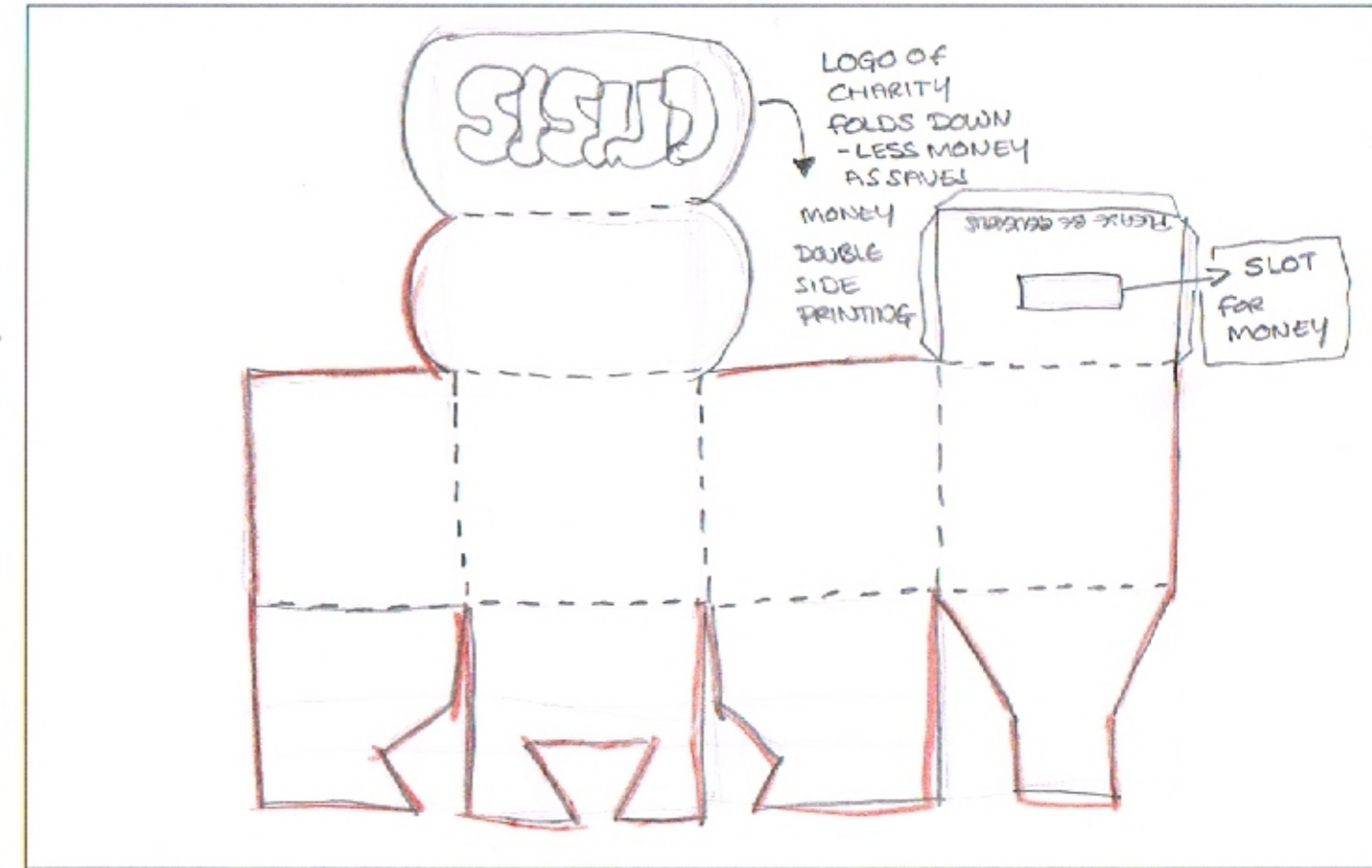
Complete the table showing important criteria for your collection box and give your reasons. An example has been provided.

Design criteria	Reasons
The box must fold flat	This will reduce storage space and make it easier to transport the boxes from the printers to the charity
MUST HAVE AN AREA TO PLACE THE MONEY	This will enable the money to be collected to help the charity
MUST HAVE A STRONG BASE	This enables lots of money to be raised and collected without falling out the bottom.

Below, draw a 3D view of your collection box, adding notes and/or sketches to explain how it folds flat.



In the space below draw the net for your collection box.



Using the design criteria above to assist you, evaluate your design proposal as to its effectiveness as a collection box as well as a promotional product

I think my collection box meets the criteria as it has the charity's name on the box. It is shown clearly on the flap above. There is a slot available on the top for the money to be placed easily. It also has a strong base to allow the money to not fall through the bottom.